

Telescopic box boom marine crane and offshore for offshore service vessel

Brief Introduce of telescopic boom marine crane

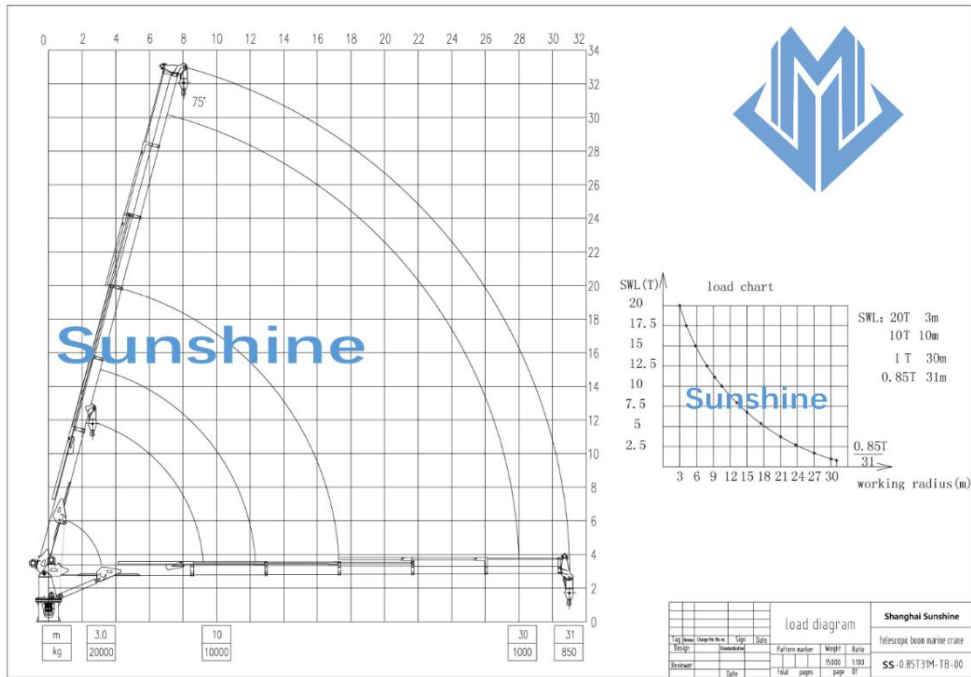
The telescopic box boom marine crane/offshore crane is designed as an electro-hydraulic driven stiff boom crane, with integrated electro-hydraulic power package or independent electro-hydraulic power package, delivered as a complete unit ready for installation to foundation. The crane is equipped with hydraulic powered winch, hydraulic powered luffing, hydraulic powered extension and hydraulic powered slewing system. The crane is installed with a rolled steel pedestal for bolting or welding to deck foundation with a standard height of the crane. The different pedestal height is available base on customer`s requirement. The standard telescopic boom crane is supplied with an operator platform. Operator cabin is available base on customer`s requirement.

Technical specification

1	SWL	4t@30m 30t@5m
2	Max working radius	30m
3	Min working radius	3m
4	Hosting speed	0~12m/min
5	Slewing speed	0.6r/min
6	Slewing angle	360° free
7	Luffing time	70s
8	Hook travel	30m
9	DFT of painting	320um
10	Extension time	100s
11	Working condition	
	Heel	≤ 5°
	Trim	≤ 2°
12	Electric motor	
	Power	90Kw
	Speed	1480r/min
	Power source	440V 50Hz,
	Protect class	F
	Working type	S1
13	Flow	100L/min

14	Design temperature	-10°~40°
15	Dead weight	~28000 kg

Load chart



General drawing

